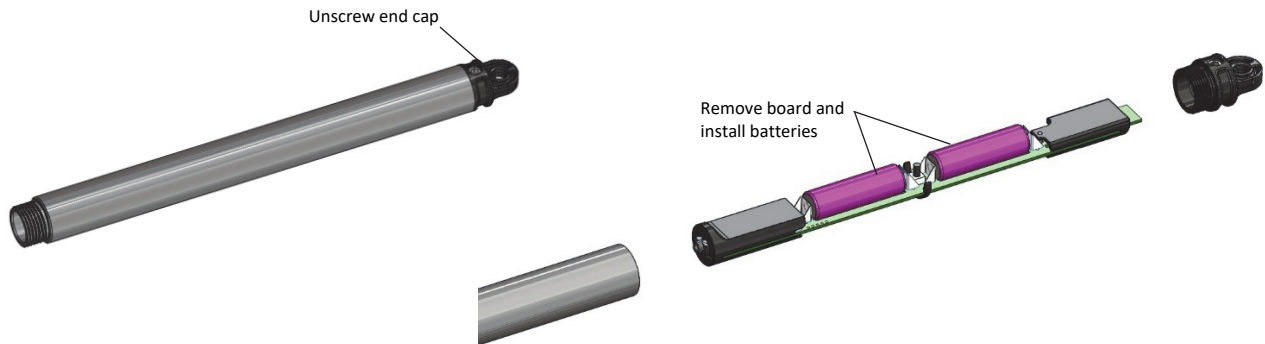


# HOBO® MX Water Level Logger (MX2001) Quick Start Guide

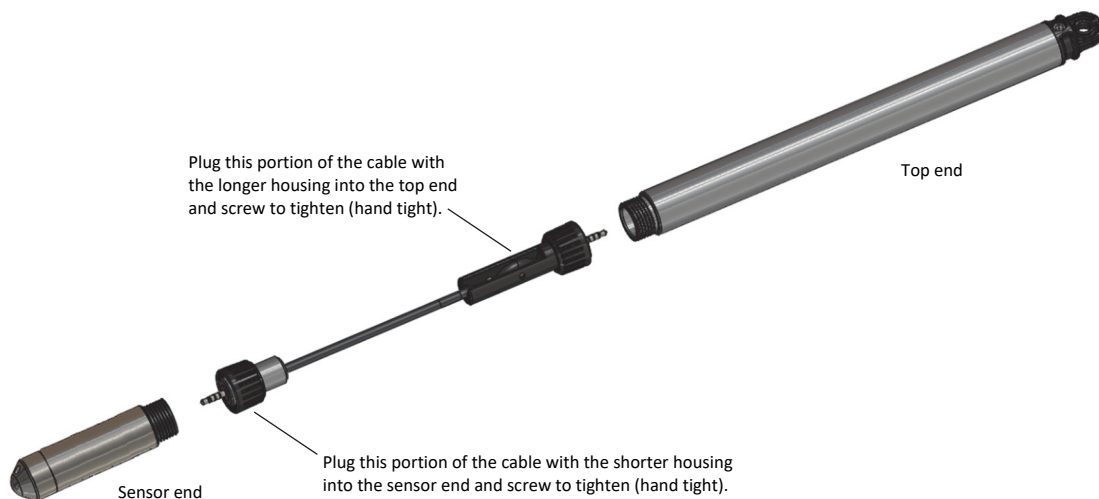
**Before you begin:** After completing steps 1–4, we recommend that you perform a trial run of steps 5 through 11 before deploying the logger.

**IMPORTANT:** When assembling the logger or attaching the cable, make sure the O-rings and mating housing surfaces are clear of any debris. Any contamination of these surfaces can cause leaks that will lead to logger failure.

- 1** Install the batteries in the top end. Unscrew the end cap and pull out the board. Apply a small amount of the fresh dielectric grease (included) to the battery terminals. Insert the included two AA batteries observing polarity as shown on the board. Reinsert the board. Screw the cap back on until hand tight.



- 2** Connect the top end to the sensor end with the water level logger cable as shown here. The end of the cable with the longer housing connects to the top end as shown below.



- 3**
  - Download HOBObconnect® to a phone or tablet from the App Store® or Google Play™.
  - Download HOBObconnect to a Windows® computer from [www.onsetcomp.com/products/software/hobobconnect](http://www.onsetcomp.com/products/software/hobobconnect).
- 4** Open the app. Enable Bluetooth® in your device settings if prompted.
- 5** Tap Devices in the app. The logger should appear in the list of devices. If it does not appear, make sure it is within range of your phone, tablet, or computer. (Note that the serial number shown in the app is for the top end of the logger).
- 6** If you are ready to deploy the logger, place it in the deployment location. Refer to the logger manual at [www.onsetcomp.com/resources/documentation/19389-mx2001-manual](http://www.onsetcomp.com/resources/documentation/19389-mx2001-manual) for deployment guidelines. Otherwise, skip deployment and complete the following steps as a test.
- 7** Tap the logger tile in the app to connect to the logger and tap Configure & Start to set up the logger.

---


**8** Scroll down in the Configuration screen to select the measurement parameters you want to log. Enable differential pressure if you want water level. Make sure that temperature is enabled if you want water level, absolute pressure, or differential pressure.

---



**9** Select any other logger settings as desired and then tap Start to save the settings to the logger. The logger begins logging data based on the settings you selected.

---

**10** In the logger screen:

- a. Tap Calibrate.
  - b. Enter a Reference Water Level and select the unit type. Enter the Reference Water Level at the time the current deployment started logging.
  - c. Select a different water density if necessary or enter your own next to Manual Input.
  - d. Tap Save. Changes take effect immediately. This also creates reference water level and water density events in the data file.
  - e. **Note:** You can also edit the water parameters after you have downloaded data from the logger by tapping  when viewing a data file. See Using the Data File Viewer for details.
- 

**11**

To download data from the logger to your device, tap Devices. Connect to the logger and tap Download Data. To view or export the data, tap Data, tap  (if applicable), and tap .

---



For detailed specifications and information about this logger, refer to the *HOBO® MX Water Level Logger (MX2001-0x) Manual* at: [www.onsetcomp.com/resources/documentation/19389-mx2001-manual](http://www.onsetcomp.com/resources/documentation/19389-mx2001-manual) or scan the code at the left.